

To Mt. Chōjagatake, Tenshigatake

To Inokashira, Jinba Falls

Tōkai Nature Trail

Tōkai Nature Trail



Diamond Fuji Viewpoint

For about 1 week around April and August 20th, the reflection of Mt. Fuji from the morning sun can be seen in the lake

Observation Deck

Kotaruki Hot Spring
Gazebo

Tanuki Shrine

Parking for 20 cars P

Lake Tanuki Square

Parking for 50 cars P

W.C.

Pier

Kansuien Pond

To Pref. Route 414
Asagiri Highland

Inokashira Firefly Preserve

Cycling Road
One-way for bicycles

Lake Tanuki



Towards Mt. Fuji

Deck

Gazebo

Site B

Terrace

Pier

Nakanoshima

Rest House Yōraku no Ie (Administration)
(open 8AM to 5PM, Contains office, cafeteria and shop)
Rental bicycles, boats and fishing gear

Lake Tanuki Harbor Garden

Hime Bridge

Resort Village Fuji

Site A

Cookhouse

Campsite

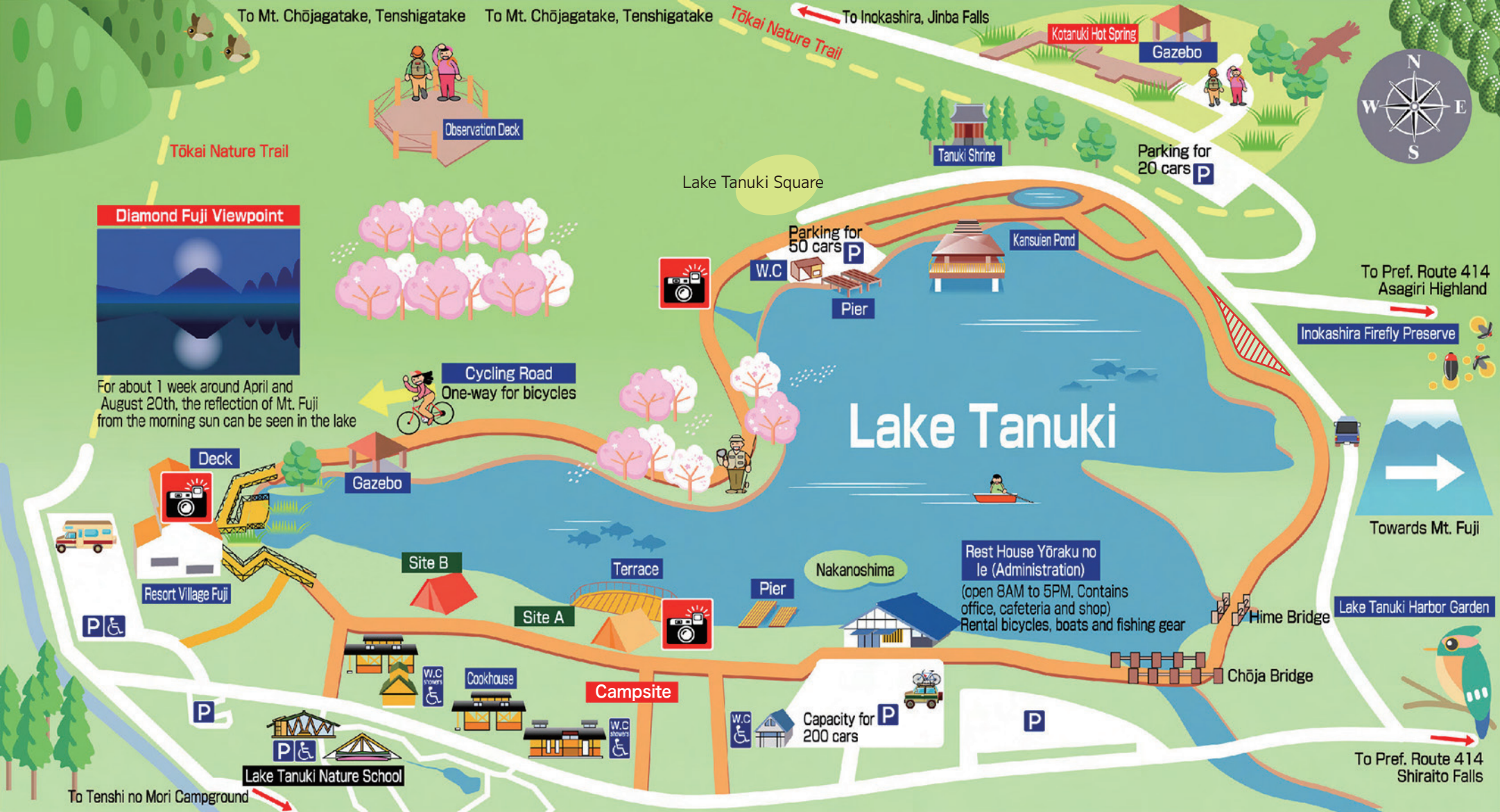
Capacity for 200 cars P

P

Lake Tanuki Nature School

To Pref. Route 414
Shiraito Falls

To Tenshi no Mori Campground

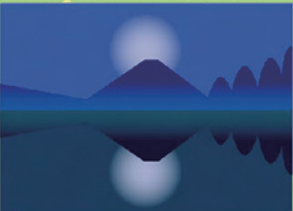


To Mt. Chōjagatake, Tenshigatake

To Inokashira, Jinba Falls

Tōkai Nature Trail

Diamond Fuji Viewpoint



For about 1 week around April and August 20th, the reflection of Mt. Fuji from the morning sun can be seen in the lake

Observation Deck

Lake Tanuki Square

Tanuki Shrine

Parking for 20 cars P

Kansuien Pond

Parking for 50 cars P

W.C.

Pier

To Pref. Route 414 Asagiri Highland

Inokashira Firefly Preserve

Cycling Road One-way for bicycles

Lake Tanuki

Towards Mt. Fuji

Deck

Gazebo

Site B

Terrace

Nakanoshima

Rest House Yōraku no Ie (Administration)

(open 8AM to 5PM. Contains office, cafeteria and shop) Rental bicycles, boats and fishing gear

Hime Bridge

Lake Tanuki Harbor Garden

Site A

Pier

Campsite

Capacity for 200 cars P

P

To Pref. Route 414 Shiraito Falls

Resort Village Fuji

P

W.C.

Cookhouse

W.C.

Lake Tanuki Nature School

To Tenshi no Mori Campground